



aerospace
climate control
electromechanical
filtration
fluid & gas handling
hydraulics
pneumatics
process control
sealing & shielding



Diaphragm Accumulators

ELM from 140 to 350 bar

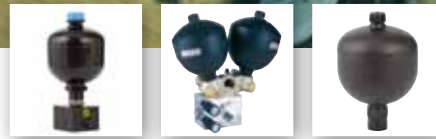


ENGINEERING YOUR SUCCESS.

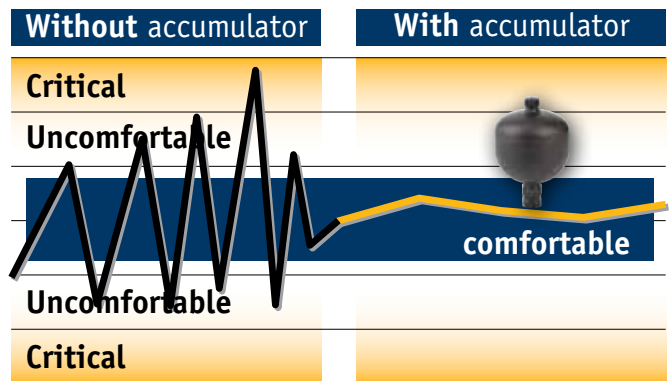
Day to day, the agricultural, forestry, construction and public works sectors are faced with the fundamental question:

How to enhance driver and vehicle comfort?

Thanks to our comprehensive range of diaphragm accumulators, we offer our customers flexibility of driving at record speeds while guaranteeing enhanced machinery longevity.



Comparative cycle for a tractor and its accessories in working conditions !



*Study carried out in cooperation with one of the largest manufacturers of agricultural machinery



Speed 50 kph



Load variation on front axle 3,5 to 100 %

An example*

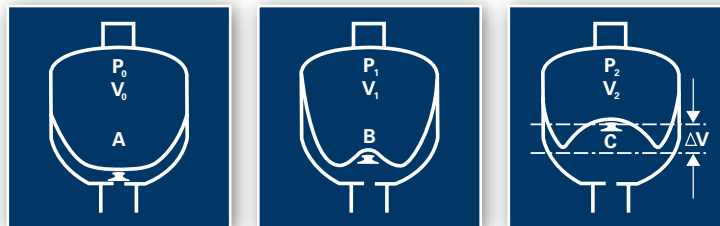
of application

Faced with difficult working conditions, a farm supervisor wants to **increase his driving comfort and reduce breakage** among his fleet of machines.

Main Features

Operation principle

Operation of the Parker Olaer gas loaded diaphragm accumulator is based on the considerable difference in compressibility between a gas and a liquid, enabling a large quantity of energy to be stored in an extremely compact form. This enables a liquid under pressure to be accumulated, stored and recovered at any time.



V0 = Capacity in nitrogen of the accumulator	P0 = Initial preload of the accumulator
V1 = Gas volume at the minimum hydraulic pressure	P1 = Gas pressure at the minimum hydraulic pressure
V2 = Gas volume at the maximum hydraulic pressure	P2 = Gas pressure at the maximum hydraulic pressure
ΔV = Returned and/or stored volume of working fluid between P1 and P2	

A - The diaphragm is in the pre-charge position, which means that it is only filled with nitrogen. The knob closes the hydraulic orifice and prevents the destruction of the diaphragm.

B - Position at the minimum operating pressure : there must be a certain amount of fluid between the diaphragm and the hydraulic orifice, such that the knob does not close the hydraulic orifice. Thus, P_0 must always be $< P_1$.

C - Position at the maximum operating pressure: the volume change ΔV between the minimum and maximum positions of the operating pressures represents the fluid quantity stored.

Your Benefits

The adaptation of a hydraulic shock absorber made up of a diaphragm accumulator improves driver comfort and offers immediate response times when driving over obstacles and the same flexibility for variable operating conditions.

0 < speed < 50 kph

3.5 < load variation < 100%

Identical flexibility depending on your use.

The same EC pressure directive (PED) compliant accumulator can be used in over 35 destination countries, thus facilitating their free movement.

In addition all our ELM diaphragm accumulators have SELO approval for China.

Technical Characteristics

The technical characteristics are as follows:

Minimum/maximum temperature allowable (° Celsius) :

- 20/+ 80 for standard nitrile elastomers for models 0.075 ≥

1.4 Litre

- 10/+ 80 for standard nitrile elastomers for models ≥ 2 Litres

- 35/+ 80 for hydrin elastomers

Materials : carbon steel or stainless steel, nitrile or hydrin diaphragm, for other constructions: consult Parker Olaer.



How to size?

Parker Olaer has developed a very sophisticated simulation software to optimize accumulator sizing recommendations. The behaviour of accumulators used in applications such as pulsation dampening, surge alleviation, thermal expansion and energy storage can be simulated. Our software can be downloaded from our website (www.parker.com/acde). You may also contact your local Parker Olaer office for sizing assistance.

This sizing chart can be used, on the basis of the arrangement of the various parameters, to determine the volume of oil available, the size of the accumulator or the pressures. It does not take account of the correction for actual compressibility of the real gas, the actual adiabatic coefficient or the polytropic coefficient of the application. Depending on the conditions of use, these can have a significant effect and may entail the need for certain corrections.

We recommend

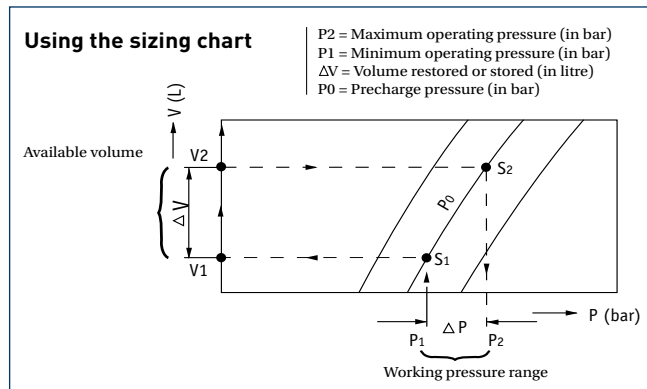
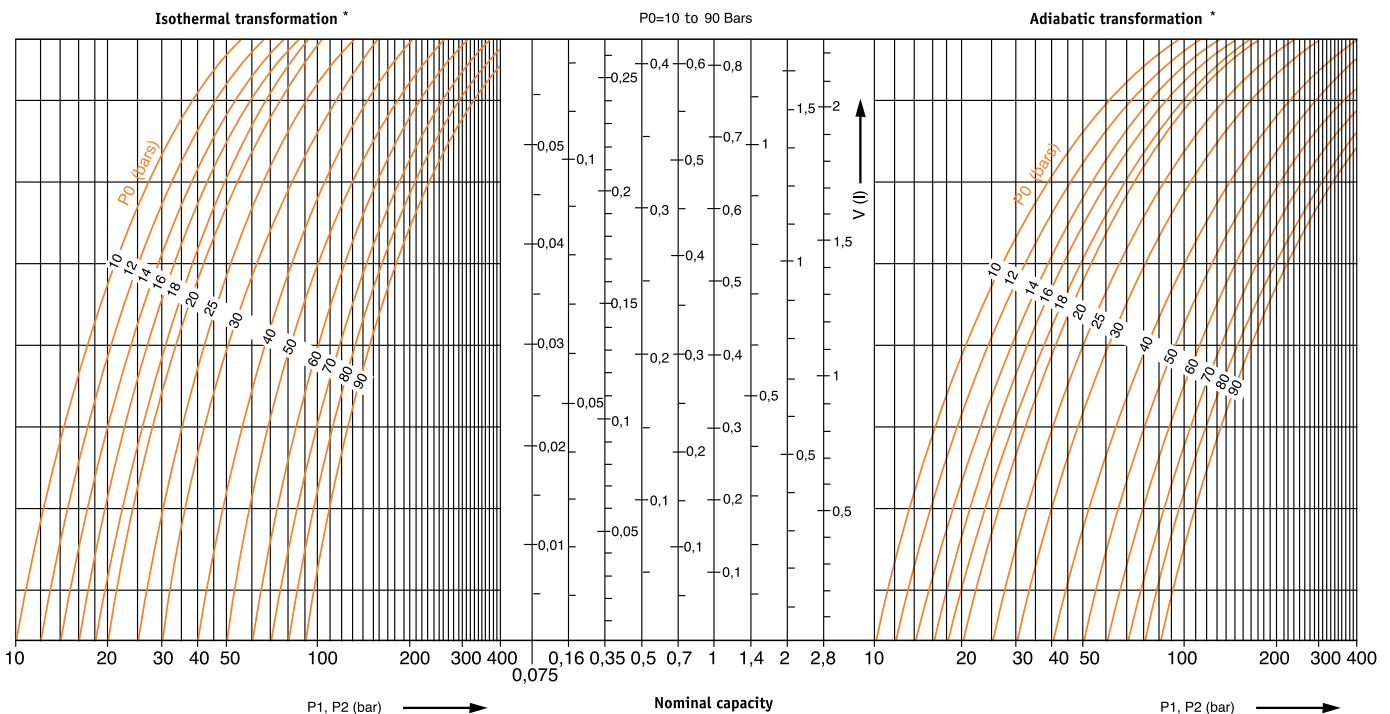
In load dampening configuration: $P_0 = 0,6 - 0,9 P_m$

(P_m = average working pressure)

Pulsation dampening: $P_0 = 0,6 - 0,8 P_m$ (P_m = average working pressure)

Energy storage: $P_0 = 0,9 P_1$ (P_1 = minimum working pressure)

Energy storage calculation sizing chart

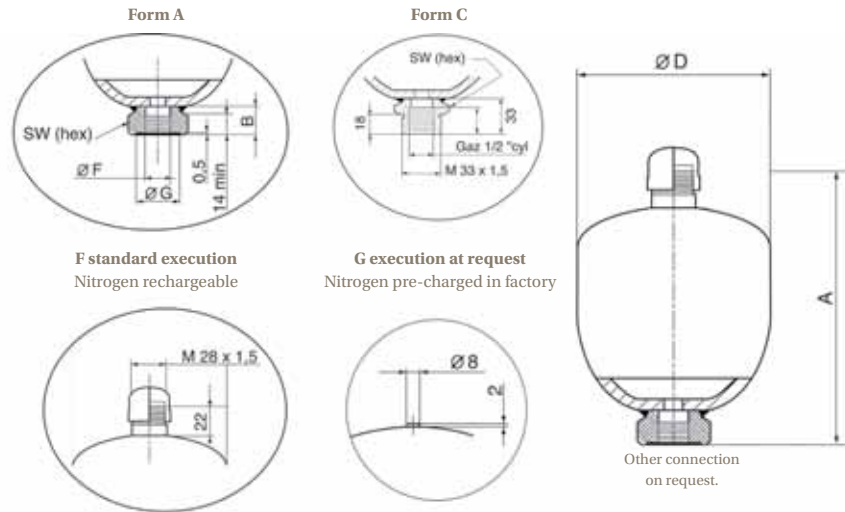


***Reminder**

Isothermal: The transformation is said to be isothermal when the compression or expansion of the gas occurs at a rate slow enough to allow a good thermal exchange, allowing the gas to remain at constant temperature.

Adiabatic: The transformation is said to be adiabatic when the cycle is quick and does not allow a temperature exchange with the ambient media.

Technical Characteristics



Type	Effective Gas vol. Litres	Work pressure (PS) bar	Execution form	Max. Precharge in bar	Max compression in bar ratio P2/P0	Max Pressure amplitude P2/P1	Weight in kg	Dimensions in mm					Oilport		Clamp type	Lock nut type
								A max Height	B	SW	D	G	F	H		
ELM 0.075-250/00/AF*	0.075	250	AF	130	8	210	0.7	112	22	32	64	29	G½	-	-	-
ELM 0.16-250/00/AF*	0.16	250	AF	130	6	210	1	120	20	32	75	29	G½	-	-	-
ELM 0.32-210/85/AF*	0.32	210	AF	130	8	140	1.4	134	20	32	93	29	G½	-	E95	-
ELM 0.50-210/85/AF*	0.50	210	AF	130	8	175	2	153	22	41	106	34	G½	-	E106	-
ELM 0.50-210/85/CF*	0.50	210	CF	130	8	175	2	163	22	41	106	-	G½	M33x1.5	E106	M33
ELM 0.75-210/85/AF*	0.75	210	AF	130	8	175	2.6	166	22	41	122	34	G½	-	E114	-
ELM 0.75-210/85/CF*	0.75	210	CF	130	8	175	2.6	177	33	41	122	-	G½	M33x1.5	E114	M33
ELM 0.75-350/85/AF*	0.75	350	AF	130	8	150	4	168	18	41	133	34	G½	-	E136	-
ELM 0.75-350/85/CF*	0.75	350	CF	130	8	150	4	184	18	41	133	-	G½	M33x1.5	E136	M33
ELM 1-210/85AF*	1	210	AF	130	8	170	3.5	180	22	41	136	34	G½	-	E136	-
ELM 1-210/85/CF*	1	210	CF	130	8	170	3.5	191	33	41	136	-	G½	M33x1.5	E136	M33
ELM 1.4-140/88/AF	1.40	140	AF	130	8	120	4.1	191	22	41	148	34	G½	-	E155	-
ELM 1.4-140/88/CF	1.40	140	CF	130	8	120	4.1	202	33	41	148	-	G½	M33x1.5	E155	M33
ELM 1.4-210/88/AF	1.40	210	AF	130	8	120	4.2	191	22	41	148	34	G½	-	E155	-
ELM 1.4-210/88/CF	1.40	210	CF	130	8	120	4.2	202	33	41	148	-	G½	M33x1.5	E155	M33
ELM 1.4-250/88/AF	1.40	250	AF	130	8	140	5.5	199	22	41	155	34	G½	-	E155	-
ELM 1.4-250/88/CF	1.40	250	CF	130	8	140	5.5	209	33	41	155	-	G½	M33x1.5	E155	M33
ELM 1.4-350/88/AF	1.40	350	AF	130	8	150	7	199	20	41	160	34	G½	-	E155	-
ELM 1.4-350/88/CF	1.40	350	CF	130	8	150	7	220	20	41	160	-	G½	M33x1.5	E155	M33
ELM 2-100/88/AF	2	100	AF	90	8	80	3.5	240	22	41	144	34	G½	-	E155	-
ELM 2-250/88/AF	2	250	AF	130	8	140	9.5	251	22	41	155	33	G¾	-	E155	-
ELM 2-350/88/AF	2	350	AF	130	8	200	9.5	219	22	55	180	34	G¾	-	E180	-
ELM 2-350/88/CF	2	350	CF	130	8	200	9.5	240	22	55	180	-	G¾	M45x1.5	E180	M45
ELM 2.8-250/88/AF	2.80	250	AF	130	6	140	10	268	21	41	174	34	G¾	-	E180	-
ELM 2.8-350/88/AF	2.80	350	AF	130	6	200	14.3	264	21	55	180	34	G¾	-	E180	-
ELM 2.8-350/88/CF	2.80	350	CF	130	6	200	14.3	285	21	55	180	-	G¾	M45x1.5	E180	M45
ELM 3.5-250/88/AF	3.50	250	AF	130	4	140	11	307	21	41	174	33	G¾	-	E180	-
ELM 3.5-350/88/AF	3.50	350	AF	130	4	200	16	304	21	55	180	34	G¾	-	E180	-
ELM 3.5-350/88/CF	3.50	350	CF	130	4	200	16	325	21	55	180	-	G¾	M45x1.5	E180	M45
ELM 0.75-160/85/CF ⁽¹⁾	0.75	160	CF	130	8	120	2.6	176	33	41	121	-	G½	-	E114	-

* According to the PED, article 3.3

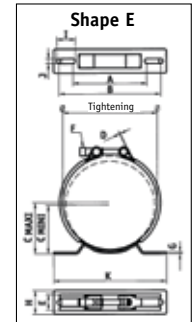
⁽¹⁾ Stainless steel version

Above dimensions are in mm and are subject to manufacturing tolerances.

Accessories

Clamps

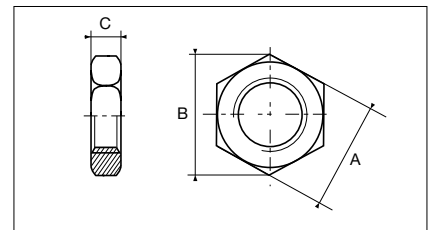
Type	Form	Recommended min/max diameter	Dimensions in mm											Recommended tightening torque N.m.	
			A	B	C		D	E	F	G	H	I	J		K
					Min	Max									
E95	E	87/97	88	140	61.5	66.5	1.5	28	M8x75	3	40	35	9	210	7
E106	E	99/109	88	140	68	73	1.5	28	M8x75	3	40	35	9	210	7
E114	E	112/124	88	140	73	78	1.5	28	M8x75	3	40	35	9	210	7
E136	E	128/138	88	140	80	85	1.5	28	M8x75	3	40	35	9	210	7
E155	E	146/157	137	189	81	86.5	1.7	30	M10x80	3	45	35	9	210	10.5
E168	E	166/176	137	189	92	96	1.7	30	M10x80	3	45	35	9	210	10.5
E180	E	178/184	137	189	97	100	2	35	M10x80	4	65	35	9	210	10.5



Lock-nut

Type	Pitch	A	B	C
M33	1.5	50	57.5	10
M45	1.5	70	80.8	10

Above dimensions are in mm and are subject to manufacturing tolerances.
 These accessories are designed so that the accumulator can be securely attached in all configurations.



Charging set VGU

The VGU universal tester and presurizer is an indispensable instrument for the verification, pressurization and nitrogen bleeding of most of the hydraulic accumulators available on the market. To use this unit, it is screwed on the inflation valve of the accumulator and connected via a high pressure hose to the nitrogen source, equipped with a pressure reducer. If only the nitrogen pressure is to be controlled or reduced, this hose is not necessary

The standard set is delivered in a storage case containing the following:
 VGU universal tester and pressuriser (end M28x1.50)

- Pressure gauge kit from 0 to 25 bar
- Pressure gauge kit from 0 to 250 bar
- Connection adapters for inflation valves (7/8" - 5/8" - 8V1 - M28x1.50)
- High pressure hose, 2.5 m long, for connecting to a nitrogen source
- Hexagon socket screw key 6 mm
- Seal Kit
- Operating instruction in French, English, German

Note:
 The following options are available on request:

Pressure gauge kits with different scale divisions: 63 mm with glycerol filled back end G1/4" cyl. equipped with direct gear for Minimesse® connection. Scale divisions 0-10, 0-60, 0-100, 0-400, with accuracy class 1.6%.

High pressure hose of different length with adapters for nitrogen bottles from various countries (specify country), at each end with a female swivel coupling G1/4" for connecting to the inflation port
 Maximum working pressure: limited by the maximum operating hydraulic system, pressure limited to **400 bar in any case.**

Ordering code - Example:
 VGU/F 25/250 7 TS2 3
 25/250 = Gauges, possible choice between pressure ranges 6/10/25/60/100/160/250/400



Safety Blocks

Are designed to incorporate in a single compact block a variety of functions necessary for the correct operation of a hydraulic system fitted with accumulators. This includes manual and/or electrical drain, isolation, flow control and pressure relief.
 Channel cross section : 10 mm (DI 10 block), 20 mm (DI 20 block).

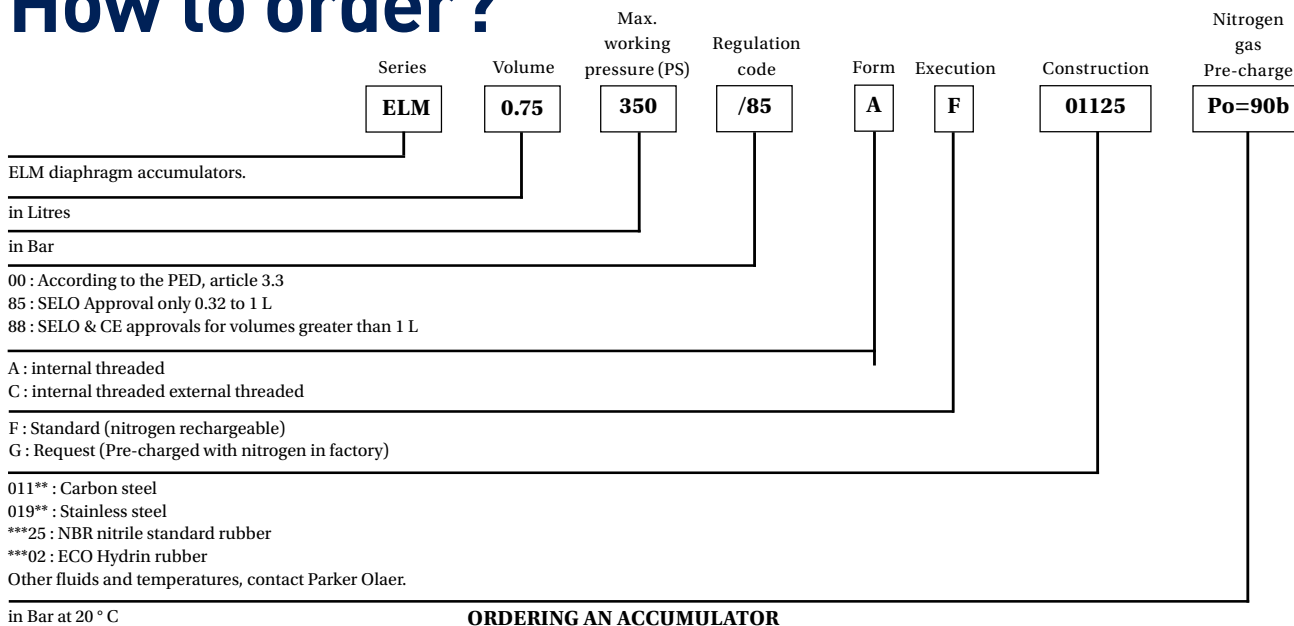
Maximum working pressure : 330 to 690 Bar depending on models. According with the fluids of group 2 (PED). Options for ATEX compliant blocks construction carbon steel or stainless steel. A specific data sheet is available on request, please contact Parker Olaer.

Function Blocks

Parker Olaer has a broad range of function blocks adapted to your specific use. Contact Parker Olaer for further information.



How to order?



ORDERING AN ACCUMULATOR

Please indicate type for accessories as per tables on page 6, and for peripheral materials.

Installation

Position: Preferably vertical (liquid connection downwards) to horizontal, depending upon application. If the accumulator is installed in any position other than vertical with fluid port down, contact Parker Olaer. The accumulator could have reduced volumetric efficiency and Parker Olaer can help you to take these factors into account.

Mounting: A 200mm clearance is required above the accumulator to allow for gas charging. Each accumulator is delivered with a user instructions leaflet. Ensure that the pipes connected directly or indirectly to the accumulator are not subjected to any abnormal force, Ensure that the accumulator cannot move, or minimise any movement that may occur as a result of broken connections. Parker Olaer clamps and brackets are designed for this purpose (and can be supplied as optional extras). The accumulator must not be subjected to any stress or load, in particular from the structure with which it is associated. Contact Parker Olaer in case of mounting on the movable structures.

IT IS STRICTLY FORBIDDEN TO

- Weld, screw or rivet anything onto the accumulator body.
- Operate in any way that may alter the mechanical properties of the accumulator.

- Use the accumulator for construction purposes. (No stress or loading)
- To modify the accumulator without prior approval from the manufacturer.

GAS FILLING

For safety reasons, use only pure nitrogen, minimum 99.8% purity. In most of the cases the pre-charge pressure is between 0,9 P1 and 0,25 P2. Your local Parker Olaer office can calculate the correct pre-charge pressure for your application.

Parker Olaer offers a range of devices for checking nitrogen pressure as well as pre-charging accumulators. Please note that various adaptors are required to interface with different accumulator filling valves and nitrogen (N2) cylinder connections throughout the world.

The part number defines the accumulator and the material construction.

Information contained on the labeling/ manufacturer's plate:

- Parker Olaer logo
- Reference Parker Olaer
- Volume
- Max. allowable working Pressure (PS)
- Working temperature range (TS)
- Parker Olaer SELO Identification

- Test pressure (PT)
- Fluid group (1 or 2 according to the PED Directive 97/23/EC)
- Gas
- Pre-charge pressure
- Serial production n°
- Parker Olaer Warning Label

Maximum allowable operating pressure

The maximum pressure (PS) is indicated on the accumulator. Check that the maximum allowable pressure is greater than that of the hydraulic system. For any other pressure, you will have to contact Parker Olaer.

Maximum allowable operating temperature

The temperature range (TS) is indicated on the accumulator. Check that the allowable temperature range covers the operating temperatures (environment and hydraulic fluid temperatures). For any other temperature, you will have to contact Parker Olaer.

Maintenance

Any intervention, maintenance, repair must be carried out by a qualified and trained personnel.



Parker Worldwide

AE – UAE, Dubai
Tel: +971 4 8127100
parker.me@parker.com

AR – Argentina, Buenos Aires
Tel: +54 3327 44 4129

AT – Austria, Wiener Neustadt
Tel: +43 (0)2622 23501-0
parker.austria@parker.com

AT – Eastern Europe, Wiener Neustadt
Tel: +43 (0)2622 23501 900
parker.easteurope@parker.com

AU – Australia, Castle Hill
Tel: +61 (0)2-9634 7777

AZ – Azerbaijan, Baku
Tel: +994 50 2233 458
parker.azerbaijan@parker.com

BE/LU – Belgium, Nivelles
Tel: +32 (0)67 280 900
parker.belgium@parker.com

BR – Brazil, Cachoeirinha RS
Tel: +55 51 3470 9144

BY – Belarus, Minsk
Tel: +375 17 209 9399
parker.belarus@parker.com

CA – Canada, Milton, Ontario
Tel: +1 905 693 3000

CH – Switzerland, Etoy
Tel: +41 (0)21 821 87 00
parker.switzerland@parker.com

CL – Chile, Santiago
Tel: +56 2 623 1216

CN – China, Shanghai
Tel: +86 21 2899 5000

CZ – Czech Republic, Klecany
Tel: +420 284 083 111
parker.czechrepublic@parker.com

DE – Germany, Kaarst
Tel: +49 (0)2131 4016 0
parker.germany@parker.com

DK – Denmark, Ballerup
Tel: +45 43 56 04 00
parker.denmark@parker.com

ES – Spain, Madrid
Tel: +34 902 330 001
parker.spain@parker.com

FI – Finland, Vantaa
Tel: +358 (0)20 753 2500
parker.finland@parker.com

FR – France, Contamine s/Arve
Tel: +33 (0)4 50 25 80 25
parker.france@parker.com

GR – Greece, Athens
Tel: +30 210 933 6450
parker.greece@parker.com

HK – Hong Kong
Tel: +852 2428 8008

HU – Hungary, Budapest
Tel: +36 1 220 4155
parker.hungary@parker.com

IE – Ireland, Dublin
Tel: +353 (0)1 466 6370
parker.ireland@parker.com

IN – India, Mumbai
Tel: +91 22 6513 7081-85

IT – Italy, Corsico (MI)
Tel: +39 02 45 19 21
parker.italy@parker.com

JP – Japan, Tokyo
Tel: +81 (0)3 6408 3901

KR – South Korea, Seoul
Tel: +82 2 559 0400

KZ – Kazakhstan, Almaty
Tel: +7 7272 505 800
parker.easteurope@parker.com

MX – Mexico, Apodaca
Tel: +52 81 8156 6000

MY – Malaysia, Shah Alam
Tel: +60 3 7849 0800

NL – The Netherlands, Oldenzaal
Tel: +31 (0)541 585 000
parker.nl@parker.com

NO – Norway, Asker
Tel: +47 66 75 34 00
parker.norway@parker.com

NZ – New Zealand, Mt Wellington
Tel: +64 9 574 1744

PL – Poland, Warsaw
Tel: +48 (0)22 573 24 00
parker.poland@parker.com

PT – Portugal, Leca da Palmeira
Tel: +351 22 999 7360
parker.portugal@parker.com

RO – Romania, Bucharest
Tel: +40 21 252 1382
parker.romania@parker.com

RU – Russia, Moscow
Tel: +7 495 645-2156
parker.russia@parker.com

SE – Sweden, Spånga
Tel: +46 (0)8 59 79 50 00
parker.sweden@parker.com

SG – Singapore
Tel: +65 6887 6300

SK – Slovakia, Banská Bystrica
Tel: +421 484 162 252
parker.slovakia@parker.com

SL – Slovenia, Novo Mesto
Tel: +386 7 337 6650
parker.slovenia@parker.com

TH – Thailand, Bangkok
Tel: +662 717 8140

TR – Turkey, Istanbul
Tel: +90 216 4997081
parker.turkey@parker.com

TW – Taiwan, Taipei
Tel: +886 2 2298 8987

UA – Ukraine, Kiev
Tel: +380 44 494 2731
parker.ukraine@parker.com

UK – United Kingdom, Warwick
Tel: +44 (0)1926 317 878
parker.uk@parker.com

US – USA, Cleveland
Tel: +1 216 896 3000

VE – Venezuela, Caracas
Tel: +58 212 238 5422

ZA – South Africa, Kempton Park
Tel: +27 (0)11 961 0700
parker.southafrica@parker.com

EMEA Product Information Centre

Free phone: 00 800 27 27 5374

(from AT, BE, CH, CZ, DE, DK, EE, ES, FI, FR, IE, IL, IS, IT, LU, MT, NL, NO, PL, PT, RU, SE, SK, UK, ZA)

US Product Information Centre

Toll-free number: 1-800-27 27 537

www.parker.com

